

## **Queensway Site Photographs Numbers:**

1. Boscombe Road looking West at existing blocks
2. Boscombe Road looking West at existing blocks
3. Boscombe Road looking west at existing blocks
4. Malvern block view from Boscombe Road
5. Malvern block view from Boscombe Road
6. Malvern Block from Sutton Road looking towards Coleman Street
7. Junction of Sutton Road and Coleman Street
8. Looking West down Coleman Street towards Pennine Block
9. Malvern block from Coleman Street
10. Pennine Block from Coleman Street
11. Coleman Street North Side
12. Malvern block from Coleman Street
13. Coleman Street North Side
14. Looking East at Malvern Block from Coleman Street
15. Coleman Street North Side
16. Looking South from Coleman Street MUGA on right
17. MUGA seen from Coleman Street
18. Pennine Block from Coleman Street
19. Pennine Block from Coleman Street
20. North side of Coleman Street
21. Looking West along Coleman Street
22. The Range site from junction of Queensway and Short Street
23. The Range site and Alexandra House in background
24. Car park of The Range site seen from East side of Short Street
25. From Short Street looking South towards Queensway multi storey car park
26. Looking North down Short Street with Church to right hand side
27. Covid testing centre on public car park West side of Short Street
28. Sorting Office in Short Street
29. Sorting office and Covid test centre on car park on Short Street
30. Short Street looking South towards Queensway
31. Covid testing structures on public car park in Short street
32. Short Street looking South East towards GP surgery on corner of Queensway
33. Short Street East Side
34. Short Street looking North East
35. Short Street trees on public car park next to sorting office
36. Short Street looking south towards Queensway multi storey car park
37. Looking west across The Range car park from Short Street
38. The Range car park from Short Street
39. The Range site
40. Junction of Short street and Queensway looking North
41. The Range Car Park looking West
42. The Range car park looking South West towards Queensway
43. Junction of Short Street and Queensway looking East with GP on left
44. GP junction of Queensway and Short Street
45. Junction of Short Street and Queensway looking South

46. Queensway looking East from Short Street Junction
47. Looking South from Queensway towards Chichester Road with multi-storey car park to right
48. Looking West at multi storey car park
49. Quantock block looking East
50. Quantock block looking East
51. Looking East across car park to South of Quantock
52. Looking South East towards rear of Southchurch Road properties
53. Looking South along Chichester Road towards Southchurch Road junction
54. Quantock block seen from Chichester Road footbridge
55. Quantock Block seen from Chichester Road footbridge
56. Looking East from Chichester Road footbridge
57. Looking South from Chichester Road footbridge towards rear of Southchurch Road
58. Looking South East from Chichester Road footbridge
59. Looking North from Chichester Road footbridge towards The Range
60. Junction of Chichester Road and Southchurch Road looking South
61. Junction of Chichester Road and Southchurch Road looking South
62. Junction of Chichester Road and Southchurch Road looking North
63. Junction of Chichester Road and Southchurch Road looking East along Southchurch Road
64. Junction of Chichester Road and Southchurch Road looking North
65. Southchurch Road looking North West
66. Southchurch Road looking North through building gap
67. Southchurch Road looking West towards town centre
68. Southchurch Road looking East away from town centre
69. Southchurch Road looking East towards Queensway roundabout
70. Southchurch Road looking West away from Queensway roundabout
71. Southchurch Road looking East towards Queensway roundabout
72. Southchurch Road looking South towards Warrior Square beyond
73. Junction of Southchurch Road And Queensway roundabout looking North with Chiltern block in foreground
74. Queensway roundabout looking North East towards Maisonettes
75. Queensway roundabout looking towards All Saints Church
76. Queensway roundabout looking South East from Southchurch Road junction
77. Queensway and Southchurch Road junction looking South
78. Queensway roundabout looking East towards Queensway footbridge
79. Queensway footbridge with Quantock Block behind
80. Queensway looking South towards Car Wash
81. Queensway looking North with Car Wash to left hand side
82. Queensway looking North East towards Porters
83. Queensway looking South with Car Wash to right hand side
84. Queensway looking South towards Subway
85. Queensway looking East from West Side of Road
86. Queensway looking North East from access to Subway
87. Queensway looking North towards underpass

88. Queensway subway
89. Queensway subway East Side
90. Queensway East side looking South West towards railway bridge
91. Queensway East side looking towards West across subway
92. East side Queensway subway entrance
93. East side Queensway looking North, church in foreground
94. Queensway North Side looking North at blocks
95. Queensway East side looking West towards car wash
96. Queensway East side subway entrance
97. Queensway East side alongside subway entrance
98. Queensway East side Porters boundary
99. Queensway East Side Porters Boundary
100. Queensway East Side Porters Boundary
101. Queensway East Side Porters Boundary
102. Queensway East side looking South alongside Subway
103. Queensway East side Roundabout subway entrance
104. Queensway East side looking West towards blocks
105. Queensway South East of Roundabout looking North at All Saints Church
106. Queensway and Southchurch Road looking at All Saints Church
107. North Side of Southchurch Road looking South East with All Saints Church behind viewer
108. Porters viewed from North Side Southchurch Road
109. Porters from North Side of Southchurch Road
110. All Saints Church from Southchurch Road
111. Southchurch Road looking East
112. Frontage of All Saints Church looking West
113. Looking North along Sutton Road from Southchurch Road with All Saints Church on left
114. Looking West from Sutton Road with Maisonettes in foreground
115. All Saints Church to rear
116. Looking North up Sutton Road towards Malvern Block
117. View from Sutton Road towards Malvern with maisonettes in foreground
118. Looking North up Sutton Road
119. Looking towards Rear of All Saints Church with maisonettes on right
120. Looking North East up Sutton Road with maisonettes to left
121. All Saints Church from Sutton Road
122. All Saints Church from Sutton Road
123. All Saints Church from Sutton Road
124. North Side Queensway looking at Chiltern block with maisonettes to right
125. Queensway roundabout viewed from footbridge looking East
126. Queensway footbridge looking South West towards town centre
127. Queensway footbridge looking West
128. Queensway footbridge looking East into underpass
129. Queensway footbridge looking West
130. Queensway footbridge looking West
131. Queensway footbridge looking at Pennine block

132. Queensway footbridge looking towards Pennine Block
133. Queensway looking towards Storehouse
134. Looking into Queensway
135. Looking into Queensway
136. Looking at Malvern block from South

20/01479/BC4M  
Queensway Development  
Site photographs

**1. Boscombe Road looking West at existing blocks**



**2. Boscombe Road looking West at existing blocks**



### 3. Boscombe Road looking West at existing blocks



### 4. Malvern block view from Boscombe Road



**5. Malvern block view from  
Boscombe Road**



**6. Malvern Block from Sutton Road looking  
towards Coleman Street**





**7. Junction of Sutton Road and Coleman Street**



**8. Looking West down Coleman Street towards Pennine Block**



**9. Malvern block from Coleman Street**



**10. Pennine Block from Coleman Street**



**11. Coleman Street North Side**



**12. Malvern block from Coleman Street**



**13. Coleman Street North Side**



**14. Looking East at Malvern Block from Coleman Street**



**15. Coleman Street North Side**



**16. Looking South from Coleman Street  
MUGA on right**



**17. MUGA seen from Coleman Street**



**18. Pennine Block from Coleman Street**



**19. Pennine Block from Coleman Street**



**20. North side of Coleman Street**



**21. Looking West along Coleman Street**



**22. The Range site from junction of Queensway and Short Street**





**23. The Range site and  
Alexandra House in background**



**24. Car park of The Range site seen from  
East side of Short Street**



**25. From Short Street looking South towards Queensway multi storey car park**



**26. Looking North down Short Street with Church to right hand side**



**27. Covid testing centre on public car park West side of Short Street**



**28. Sorting Office in Short Street**



**29. Sorting office and Covid test centre on car park on Short Street**



**30. Short Street looking South towards Queensway**



**31. Covid testing structures on public car park in Short street**



**32. Short Street looking South East towards GP surgery on corner of Queensway**



**33. Short Street East Side**



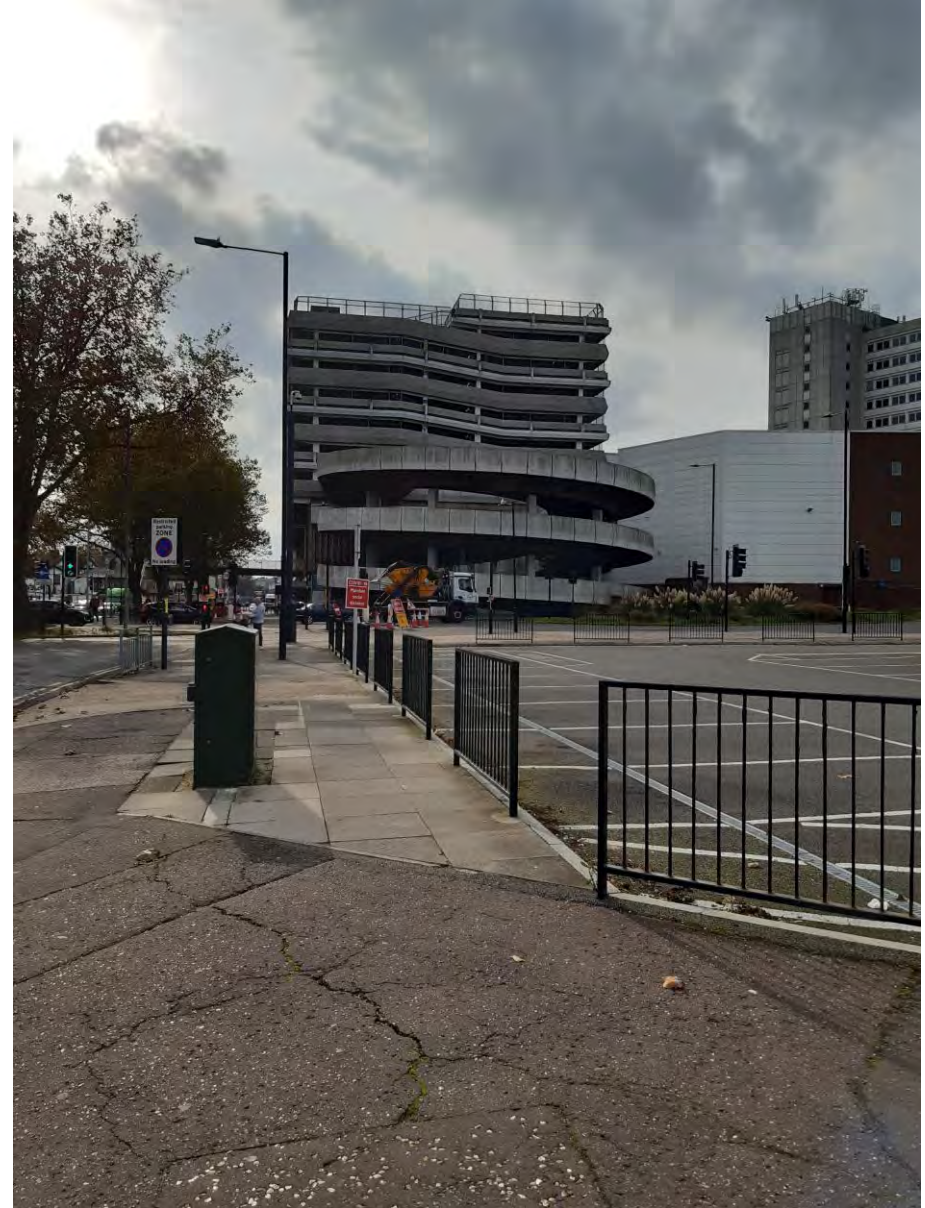
**34. Short Street looking North East**



**35. Short Street trees on public car park next to sorting office**



**36. Short Street looking south towards Queensway multi storey car park**



**37. Looking West across The Range car park from Short Street**



**38. The Range car park from Short Street**





**39. The Range site**



**40. Junction of Short street and Queensway looking North**



41. The Range Car Park looking West



42. The Range car park looking South West towards Queensway



**43. Junction of Short Street and Queensway  
looking East with GP on left**



**44. GP junction of Queensway and  
Short Street**



**45. Junction of Short Street and Queensway looking South**



**46. Queensway looking East from Short Street Junction**



**47. Looking South from Queensway towards Chichester Road with multi storey car park to right**



**48. Looking West at multi storey car park**



49. Quantock block looking East



50. Quantock block looking East



**51. Looking East across car park to South of Quantock**



**52. Looking South East towards rear of Southchurch Road properties**



**53. Looking South along Chichester Road towards Southchurch Road junction**



**54. Quantock block seen from Chichester Road footbridge**





**55. Quantock Block seen from Chichester Road footbridge**



**56. Looking East from Chichester Road footbridge**



**57. Looking South from Chichester Road footbridge towards rear of Southchurch Road**



**58. Looking South East from Chichester Road footbridge**



**59. Looking North from Chichester Road footbridge towards The Range**



**60. Junction of Chichester Road and Southchurch Road looking South**



**61. Junction of Chichester Road and Southchurch Road looking South**



**62. Junction of Chichester Road and Southchurch Road looking North**



**63. Junction of Chichester Road and Southchurch Road looking East along Southchurch Road**



**64. Junction of Chichester Road and Southchurch Road looking North**



65. Southchurch Road looking North West



66. Southchurch Road looking North through building gap



67. Southchurch Road looking West towards town centre



68. Southchurch Road looking East away from town centre



**69. Southchurch Road looking East towards Queensway roundabout**



**70. Southchurch Road looking West away from Queensway roundabout**





**71. Southchurch Road looking East towards Queensway roundabout**



**72. Southchurch Road looking South towards Warrior Square beyond**



**73. Junction of Southchurch Road And Queensway roundabout looking North with Chiltern block in foreground**



**74. Queensway roundabout looking North East towards Maisonettes**



**75. Queensway roundabout looking towards All Saints Church**



**76. Queensway roundabout looking South East from Southchurch Road junction**



**77. Queensway and Southchurch Road junction looking South**



**78. Queensway roundabout looking East towards Queensway footbridge**



**79. Queensway footbridge with Quantock Block behind**



**80. Queensway looking South towards Car Wash**



**81. Queensway looking North with Car Wash to left hand side**



**82. Queensway looking North East towards Porters**



**83. Queensway looking South with Car Wash to right hand side**



**84. Queensway looking South towards Subway**



**85. Queensway looking East from West Side of Road**



**86. Queensway looking North East from access to Subway**





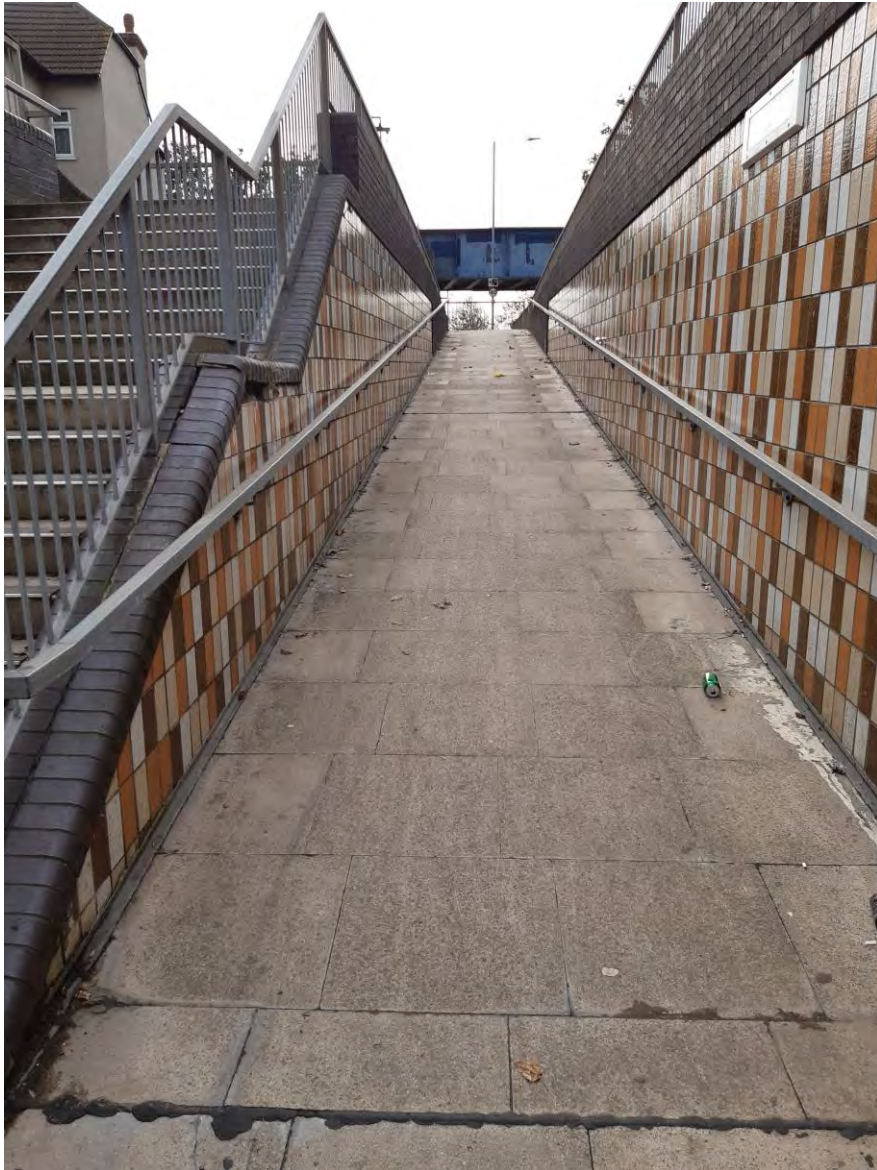
**87. Queensway looking North towards underpass**



**88. Queensway subway**



**89. Queensway subway East Side**



**90. Queensway East side looking South West towards railway bridge**



**91. Queensway East side looking towards West across subway**



**92. East side Queensway subway entrance**



**93. East side Queensway looking North,  
church in foreground**



**94. Queensway North Side looking North  
at blocks**



95. Queensway East side looking West towards car wash



96. Queensway East side subway entrance



**97. Queensway East side alongside subway entrance**



**98. Queensway East side Porters boundary**



**99. Queensway East Side Porters Boundary**



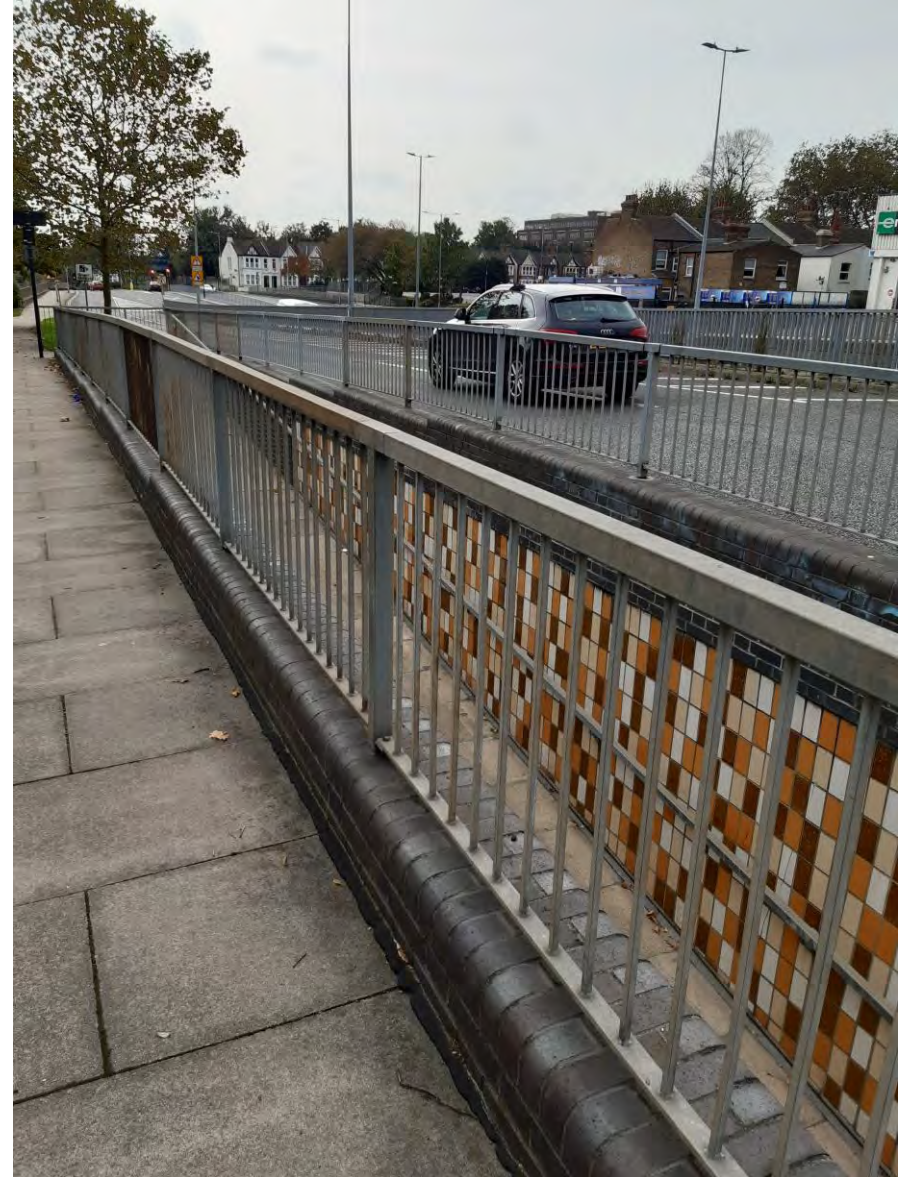
**100. Queensway East Side Porters Boundary**



**101. Queensway East Side Porters  
Boundary**



**102. Queensway East side looking South  
alongside Subway**





**103. Queensway East side  
Roundabout subway entrance**



**104. Queensway East side looking West  
towards blocks**



**105. Queensway South East of Roundabout looking North at All Saints Church**



**106. Queensway and Southchurch Road looking at All Saints Church**



**107. North Side of Southchurch Road  
looking South East with All Saints Church  
behind viewer**



**108. Porters viewed from North Side  
Southchurch Road**



**109. Porters from North Side of Southchurch Road**



**110. All Saints Church from Southchurch Road**



111. Southchurch Road looking East



112. Frontage of All Saints Church looking West



**113. Looking North along Sutton Road from Southchurch Road with All Saints Church on left**



**114. Looking West from Sutton Road with Maisonettes in foreground**



**115. All Saints Church to rear**



**116. Looking North up Sutton Road towards Malvern Block**



**117. View from Sutton Road towards Malvern with maisonettes in foreground**



**118. Looking North up Sutton Road**





**119. Looking towards Rear of All Saints Church with maisonettes on right**



**120. Looking North East up Sutton Road with maisonettes to left**



**121. All Saints Church from Sutton Road**



**122. All Saints Church from Sutton Road**



**123. Looking West along  
Queensway towards  
footbridge**



**124. North Side Queensway looking at Chiltern  
block with maisonettes to right**



**125. Queensway roundabout viewed from footbridge looking East**



**126. Queensway footbridge looking South West towards town centre**



127. Queensway footbridge looking West



128. Queensway footbridge looking East into underpass



**129. Queensway footbridge looking West**



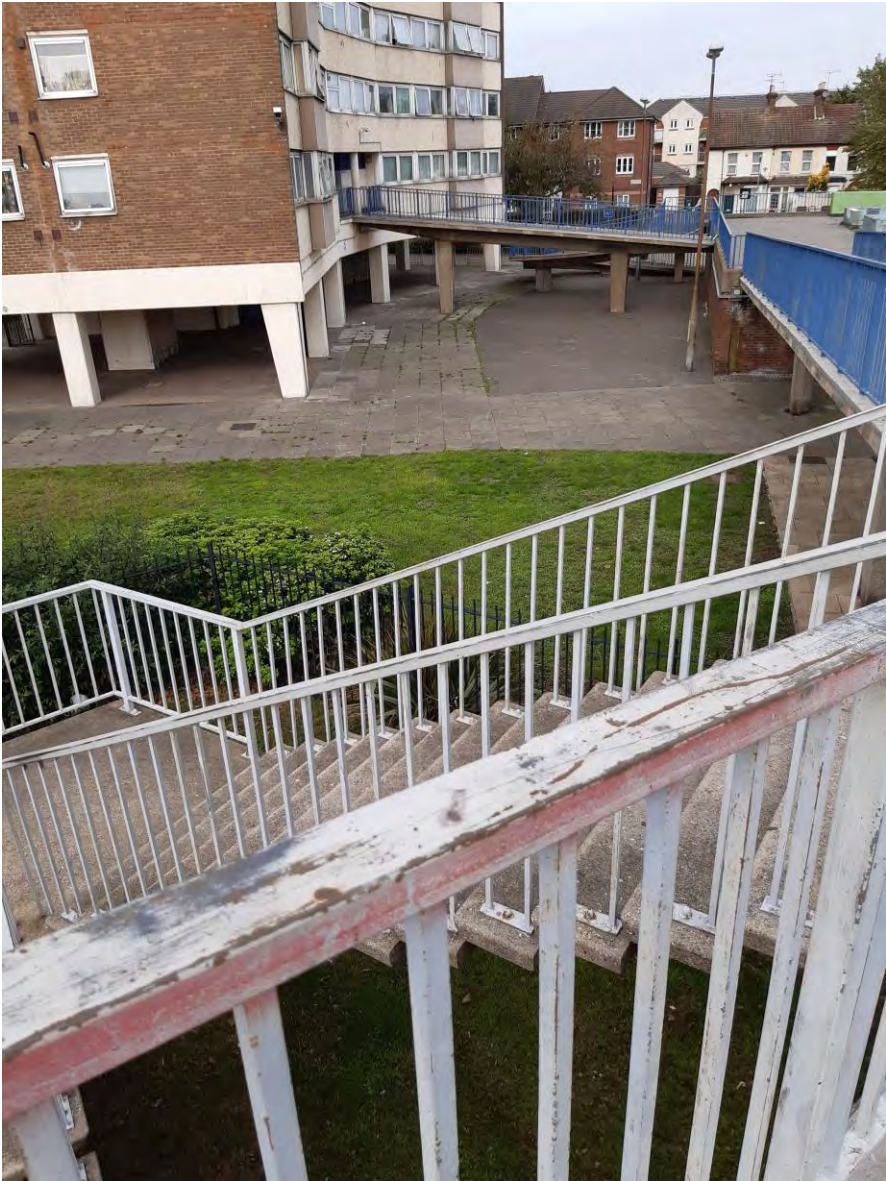
**130. Queensway footbridge looking West**



**131. Queensway footbridge looking at Pennine block**



**132. Queensway footbridge looking towards Pennine Block**



**133. Queensway looking towards Storehouse**



**134. Looking into Queensway**





**135. Looking into Queensway**



**136. Looking at Malvern block from South**

